



GREEN CHODOV

## APARTMENT A.2.5

2+KC

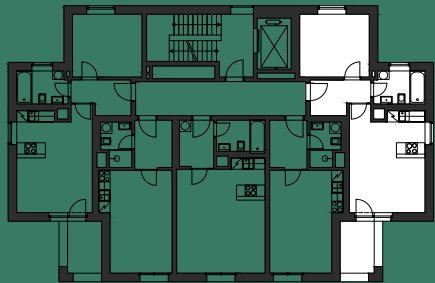
2ND FLOOR

|                                | m <sup>2</sup> |
|--------------------------------|----------------|
| 1 Hallway                      | 5,2            |
| 2 Living room with kitchenette | 21,5           |
| 3 Bedroom                      | 12,2           |
| 4 Bathroom                     | 4,7            |

INDOOR USABLE AREA 43,6

FLOOR AREA 46,1

5 Loggia 5,0



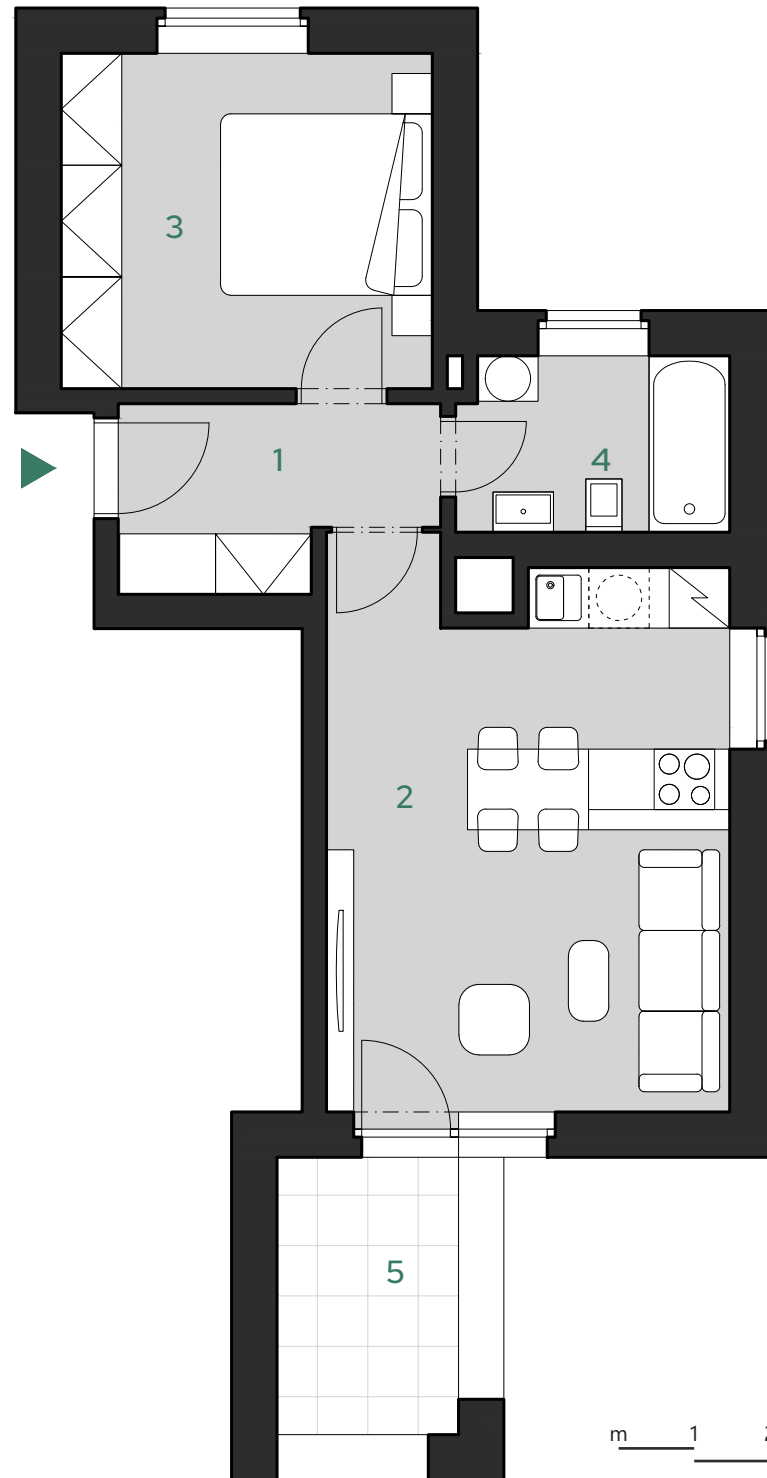
### CONTACT

info@i-homes.cz  
+420 602 398 888  
www.greenchodov.cz

### SALES CENTRE

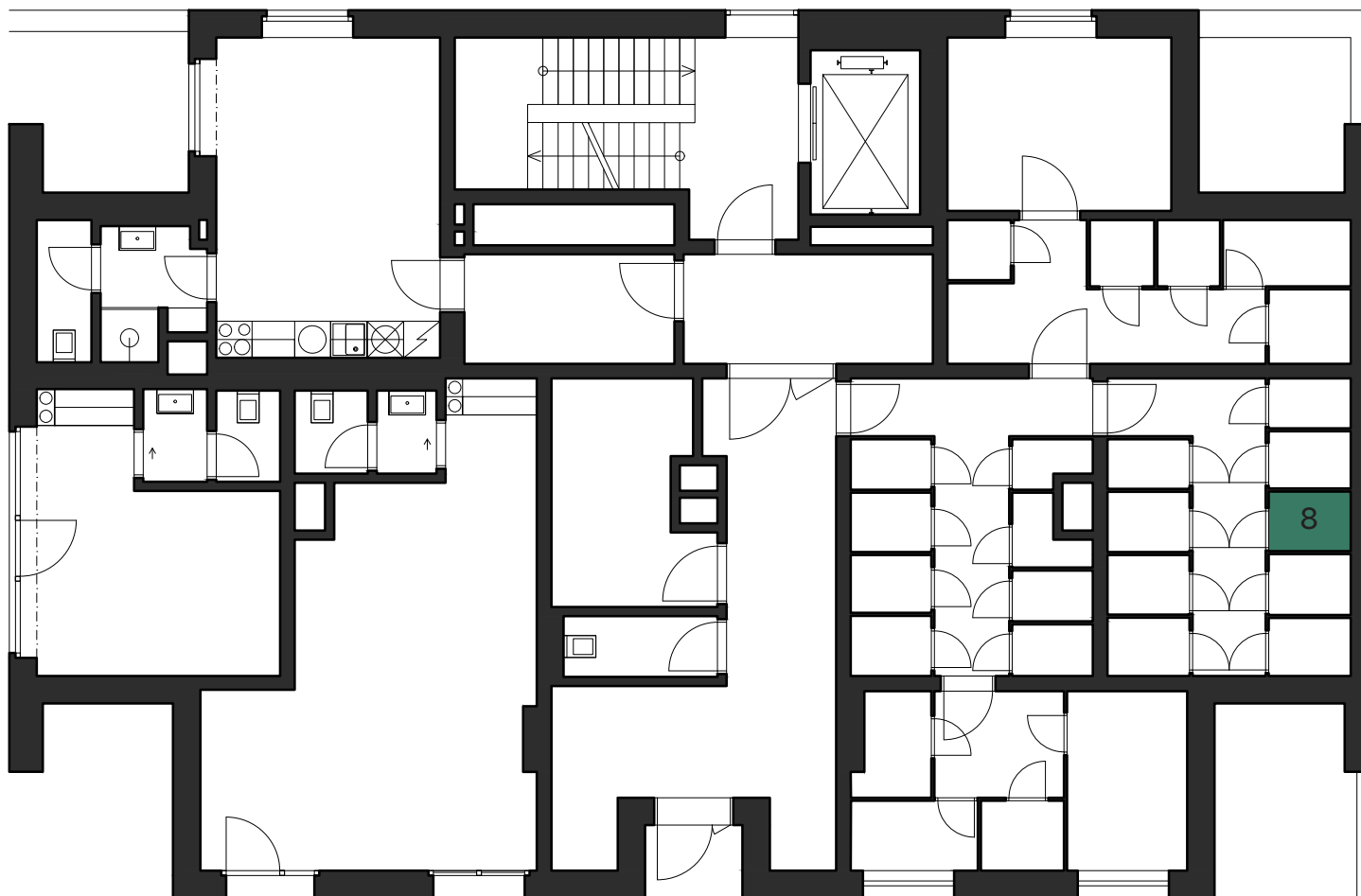
Palác Adria  
Jungmannova 36/31  
110 00 Praha 1

The room areas are approximate. The floor plan diagram shows the expected layout. Furniture, kitchen and el. appliances are not included in the price. The scope of delivery is specified in the standard. Exact parameters are specified in the contract. The developer reserves the right to make minor changes.





GREEN CHODOV



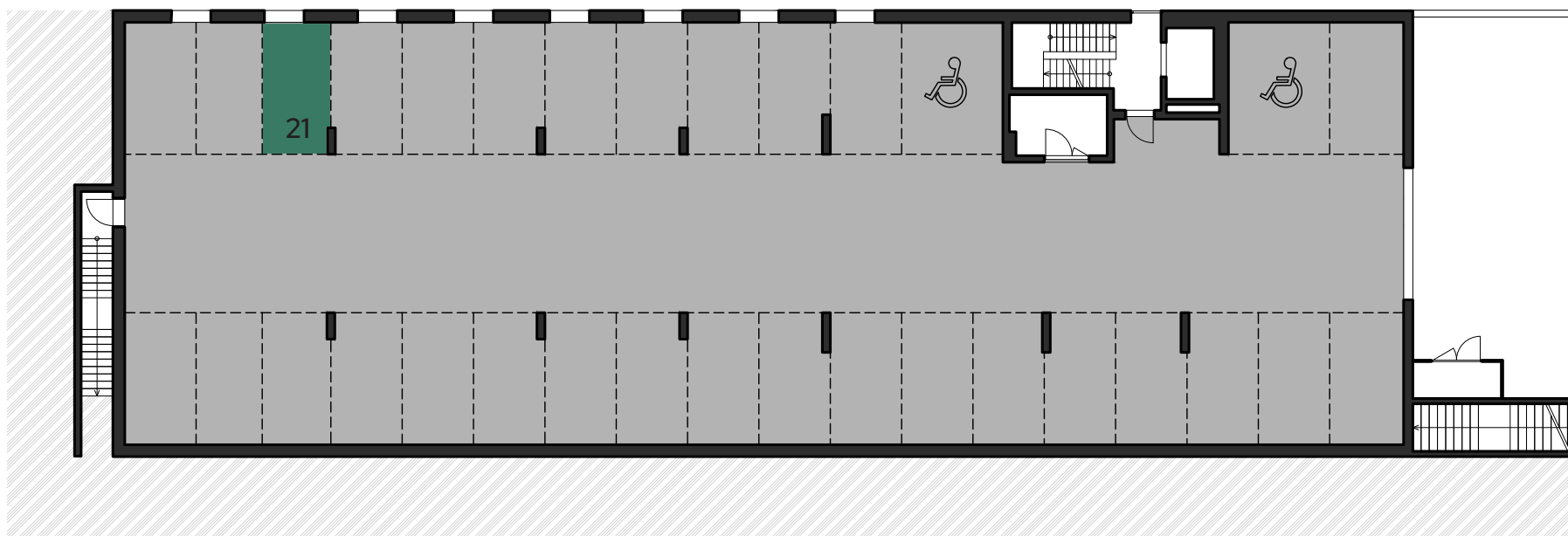
BUILDING A - 1ST FLOOR, CELLAR 8 1,3 m<sup>2</sup>

GREEN CHODOV





GREEN CHODOV



BUILDING A - BASEMENT, PARKING SPACE 21

GREEN CHODOV

